

PEKA Light Engine

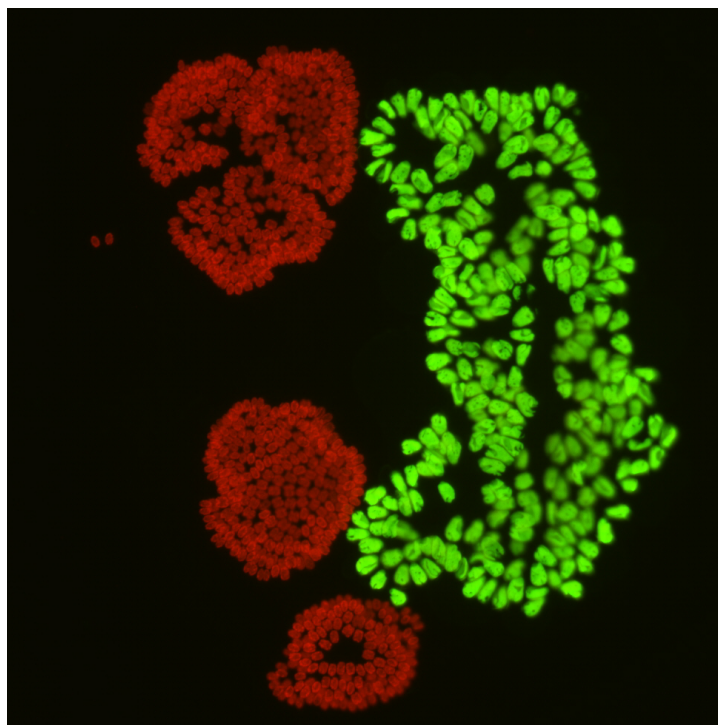


Image by Robert Zucker

White Light Illuminator for Transmitted Light Microscopy

Turnkey replacement for tungsten-halogen light sources

The PEKA Light Engine is Lumencor's white light illuminator for transmitted light microscopy. Replacing conventional tungsten-halogen white light sources could not be easier. PEKA comes with built-in mounting adapters for direct coupling to the transillumination ports of all major microscope models. Because it is passively cooled, the PEKA transmits no vibrations to the microscope. No alignment or pre-configuration is required.

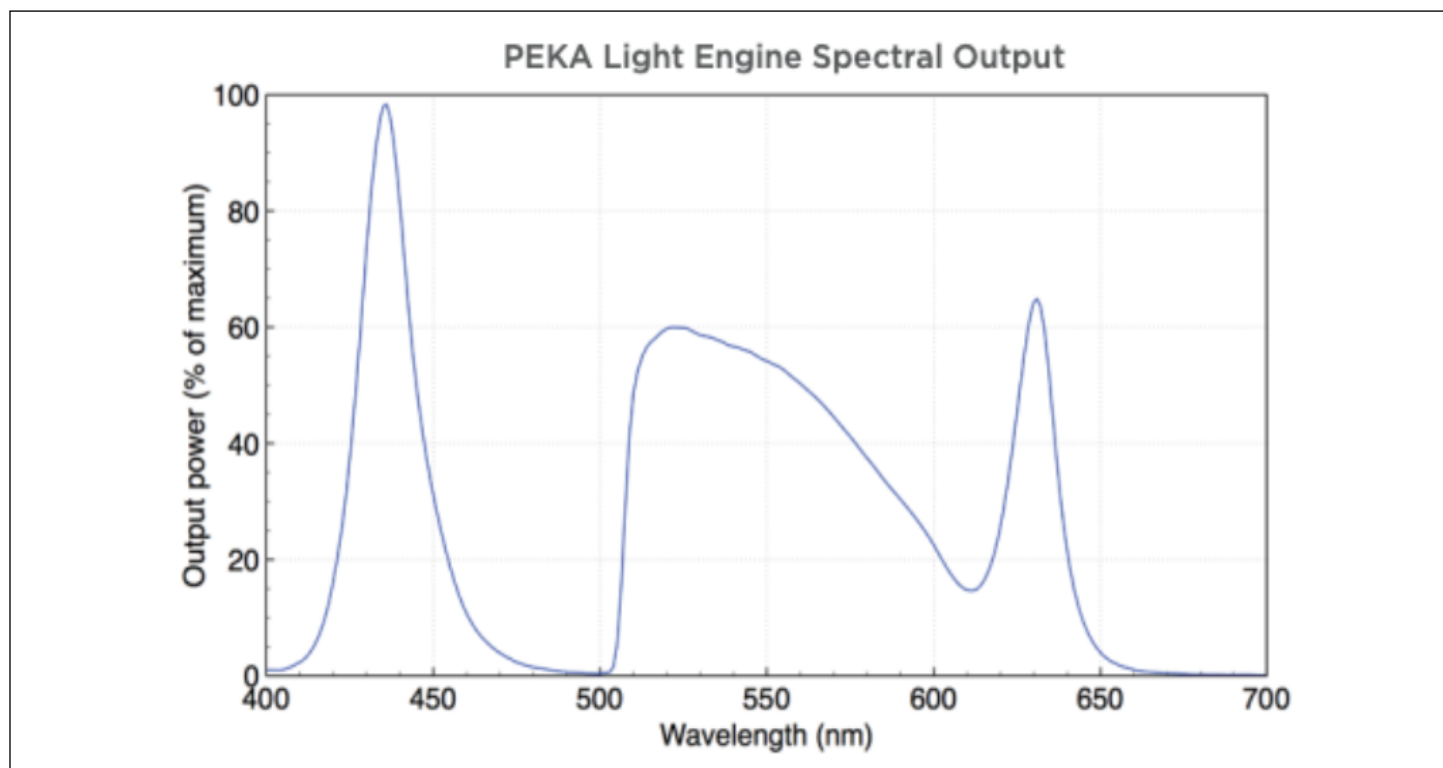
Once installed, the PEKA embodies the short-term and long-term benefits of solid-state illumination technology:

- White light is generated as a composite of outputs from three solid state sources. There are no superfluous and potentially damaging ultraviolet or infrared outputs
- The light sources do not contain phosphors with the potential to generate background signals via excitation from the facing epifluorescence light path
- No warm-up time. The PEKA does not need to be left running between imaging sessions

- Electronic adjustment of light intensity without neutral density filters
 - Constant color temperature output at all intensity settings
 - Low power consumption (~ 11W at full output)
 - No routine maintenance or consumables
- The PEKA Light Engine is available in two configurations summarized in the table below, providing options with regard to on/off and intensity control locations.

As with all Lumencor products, OEM customization is available upon request.

For more information on the [Peka Light Engine](#) please contact us at info@lumencor.com. To receive a purchase quotation for a PEKA Light Engine, please submit our online [quotation request form](#).



Features and Operating Characteristics:

Features	Details
Sources	3 solid-state sources operating simultaneously to produce white light
Output Power	~ 85 mW
Output Spectrum	400–650 nm, shown in graphic representation above
CCT	5900 to 6300 for all gray levels
Installation	Direct mount to transmitted light illumination port of all major microscope models
Manual Control	On/o and intensity controls on PEKA or Nikon microscope stand
Software Control	NIS Elements (Nikon Hub model only)
High-speed Shutter	Electronic gating of light output at > 5 kHz via TTL control signals
Consumables	None
Warranty	24 months
Power Requirements	40 W, 9 VDC, 4.45 A. Power supply and cord included with all orders.
Dimensions (W x L x H)	9 cm x 15 cm x 11 cm]
Weight	<2.0 kg
Excitation Sources	5 solid state stabilized sources, with excitation filters covering 350 to 750 nm [4]