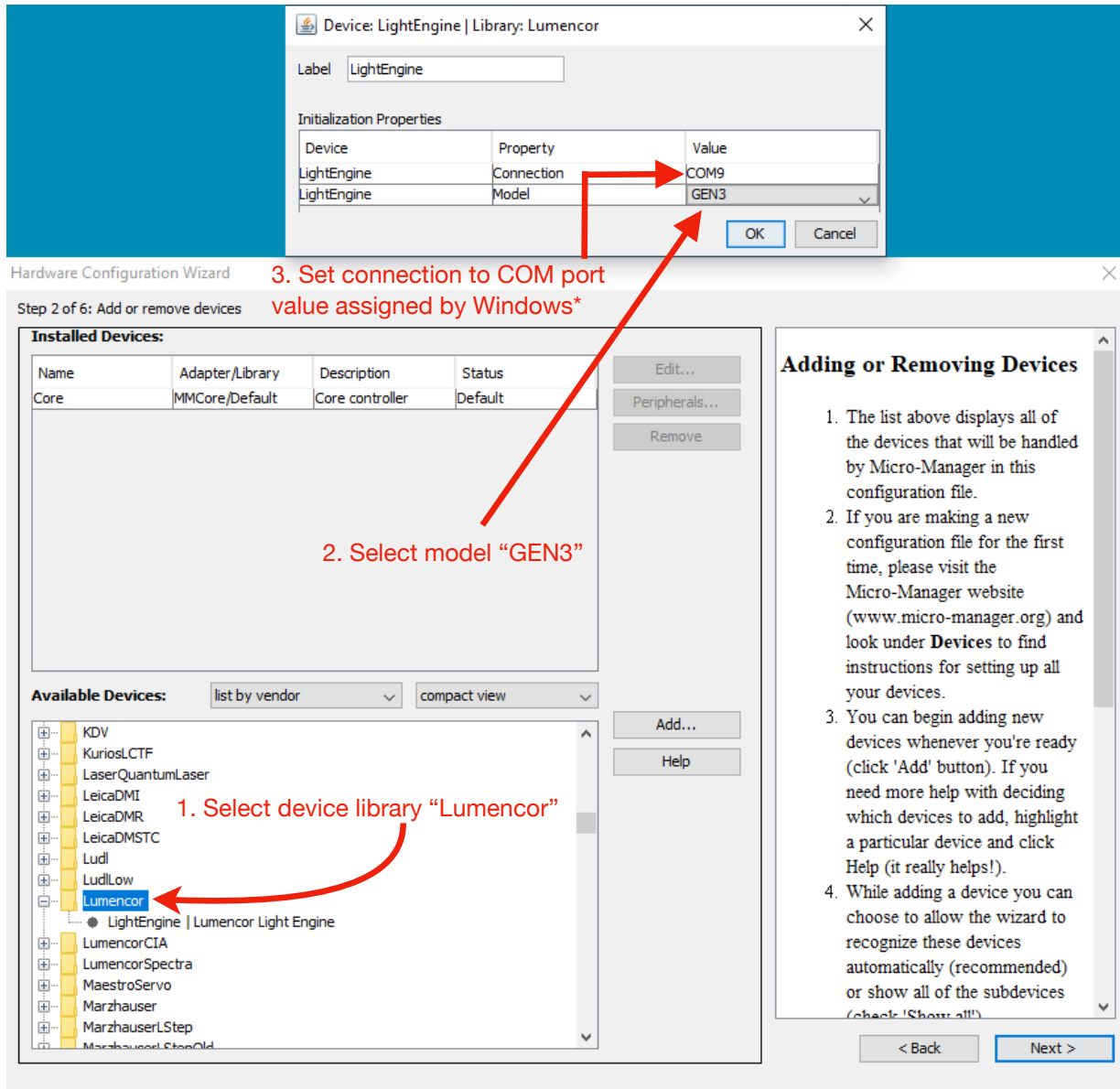


Drivers for SPECTRA, CELESTA, & AURA

The nightly builds of [MicroManager 1.4.23](#) and later include device drivers for [SPECTRA](#), [CELESTA](#) and [AURA](#) Light Engines. The basic set-up in the MicroManager Hardware Configuration Wizard is shown below.



*The COM port assigned to the Light Engine can be found in your windows Device Manager. Find the drop down menu titled "Ports". When you plug your USB into your computer a new entry will show up here with the COM port associated with it listed in parentheses. This values needs to be typed manually into MicroManager.

Note that the GEN3 driver uses STANDARD mode communications. The Light Engine serial port addressed by MicroManager must therefore be set to STANDARD mode on the settings page of the Web GUI.

Other image acquisition software packages that now support SPECTRA, CELESTA and AURA Light Engines are:

- NIS Elements (Version 5.11 and above)
- MetaMorph

For updates on controlling SPECTRA, CELESTA, and AURA Light Engines using other software packages, please email our Technical Support group at techsupport@lumencor.com.