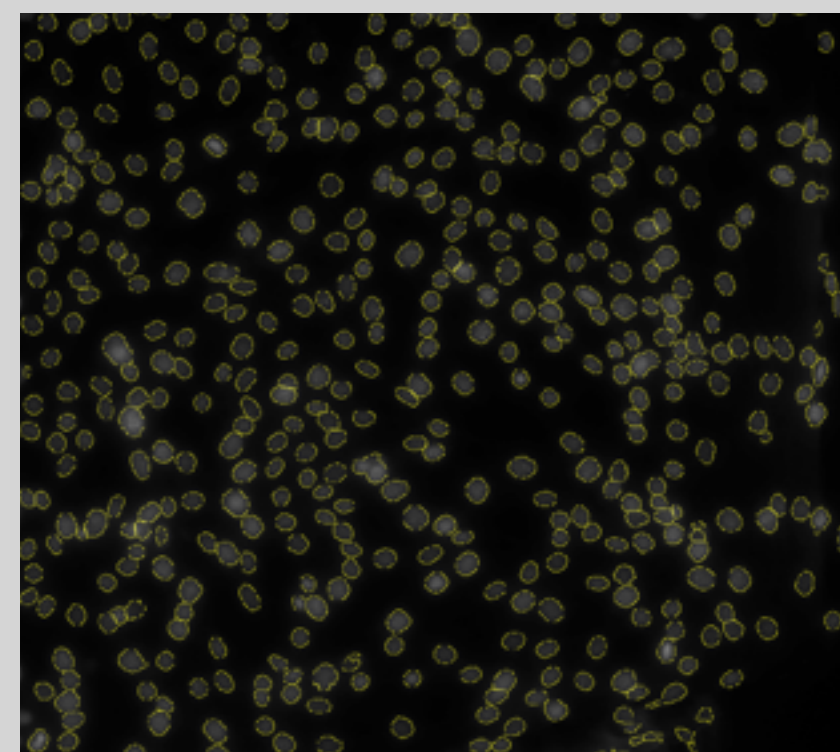
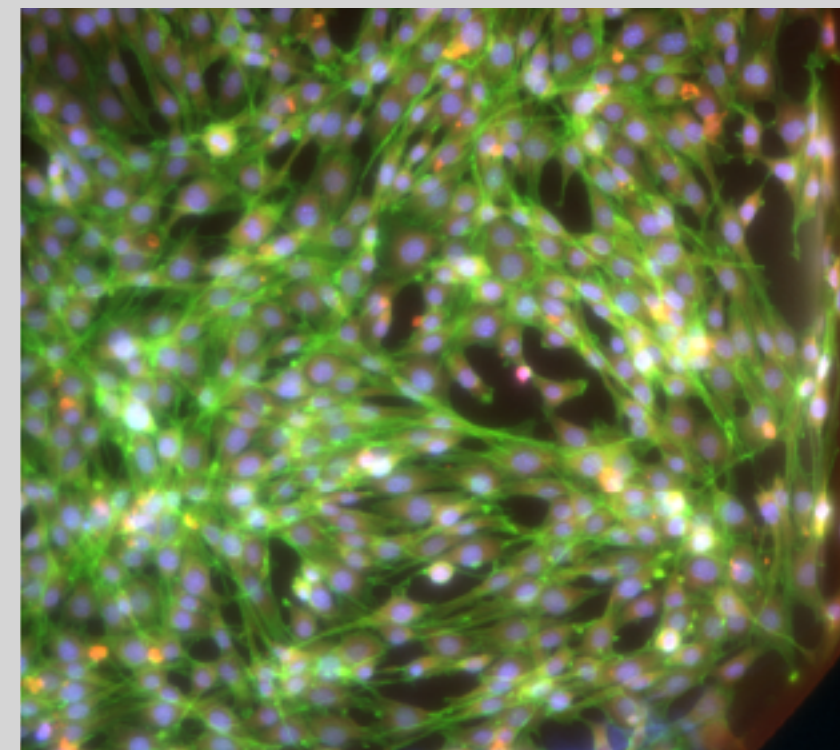


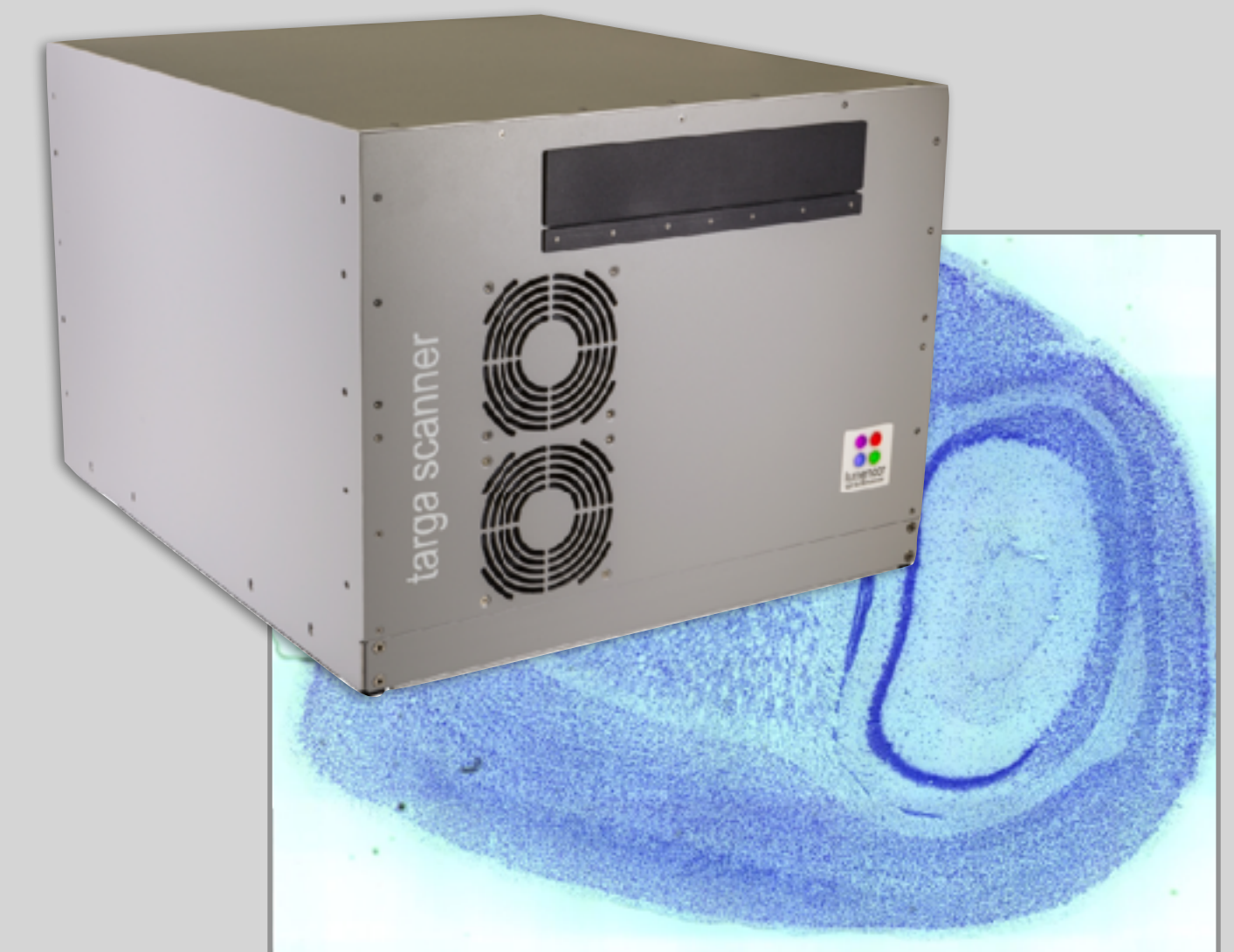
TARGA scanners: Assay-specific Scanner with High Resolution and Speed

- High Content Screening (HCS) is often complicated.
- The TARGA HC & HTP scanner combines the key components needed for best data quality and speed.
- TARGA is specifically designed and optimized for assay-specific requirements with custom components:
 - ✦ Excitation light sources
 - ✦ Optics: filters, dichroics, objectives, tube lenses
 - ✦ Large format, high speed camera
 - ✦ Robotic automation for sample introduction
 - ✦ Software control and analysis
- HCS demands robustness. Consistent performance over days, weeks and months of operation requires stable, reliable and maintenance-free light sources.
- TARGA's assays can be run autonomously, with local data storage via the onboard computer, or under client supervision (ethernet data transfer to remote storage.)
- Multiple TARGAs at one or several locations can be calibrated for inter-instrument performance, networked, and coordinated from any client, enabling a distributed, scalable approach to high-thruput analysis.



High Content and High Thruput, TARGA provides both a HCS and HTS in a single system

TARGA scanner is an ideal imager for drug screening for neurodegenerative disease.



“...the whole team has grown to love the TARGA and the amazing images it produces. Thank you again for being so thoughtful during the design, manufacturing, and maintenance!”
 . . . Primary contact/senior scientist