

LAN Set-Up

AURA, SPECTRA, CELESTA Light Engines

Setting a Static IP On Your Computer for TCP Communication to your Light Engine

Windows 7, 8, 10, or 11

STEP 1: GO TO

- Start Menu,
- Control Panel
- Network & Internet, and/or
- Network & Sharing Center

STEP 2: CLICK

- Change Adapter Settings

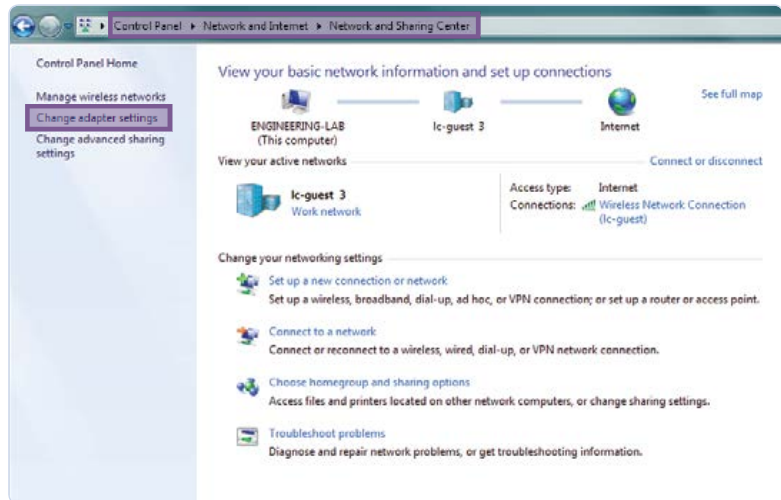


IMAGE: Step 1 and 2

STEP 3a: RIGHT-CLICK

- On Local Area Connection

STEP 3b: CLICK

- Properties (in pop-up)

STEP 4a: SELECT

- Internet Protocol Version 4 (TCP/IPv4)

STEP 4b: CLICK

- Properties button

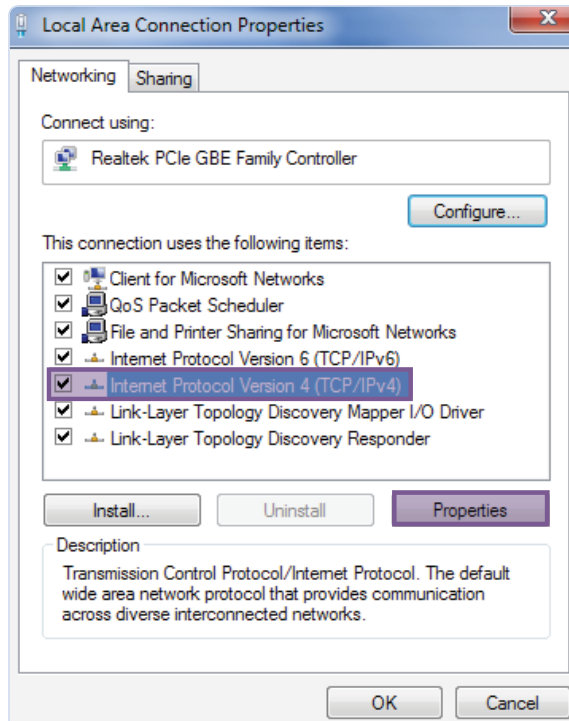


IMAGE: Step 4

STEP 5a: SELECT

- Use the following IP Address
- IP Address: 192.168.201.201
- Subnet Mask: 255.255.255.0
- Default Gateway and DNS Server are OK to leave blank

STEP 5b: CLICK

- Ok

STEP 5c: CLOSE

- Local Area Connection Properties window

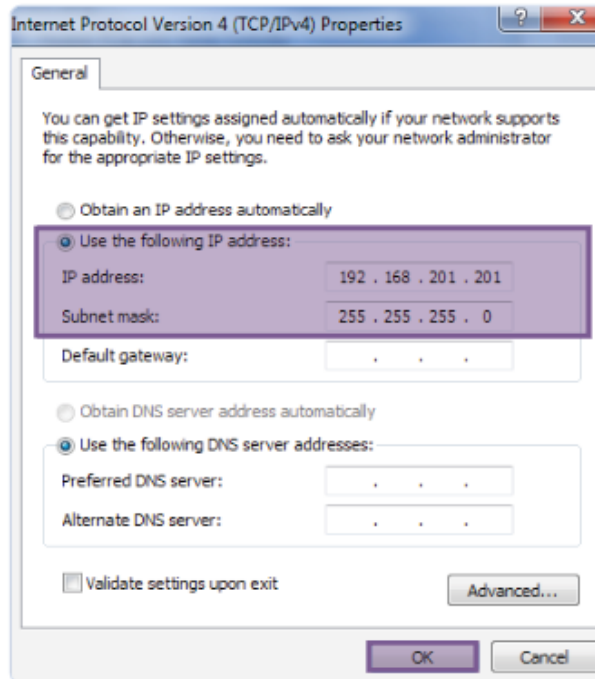


IMAGE: Step 5

STEP 6a: CLICK

- The RJ45 cable supplied with the Light Engine between the LAN port on the Light Engine and an Ethernet port on the computer

STEP 6b: Type

- The Light Engine IP address into any web browser address bar to access the resident control GUI
- **Default IP Address:**
192.168.201.200

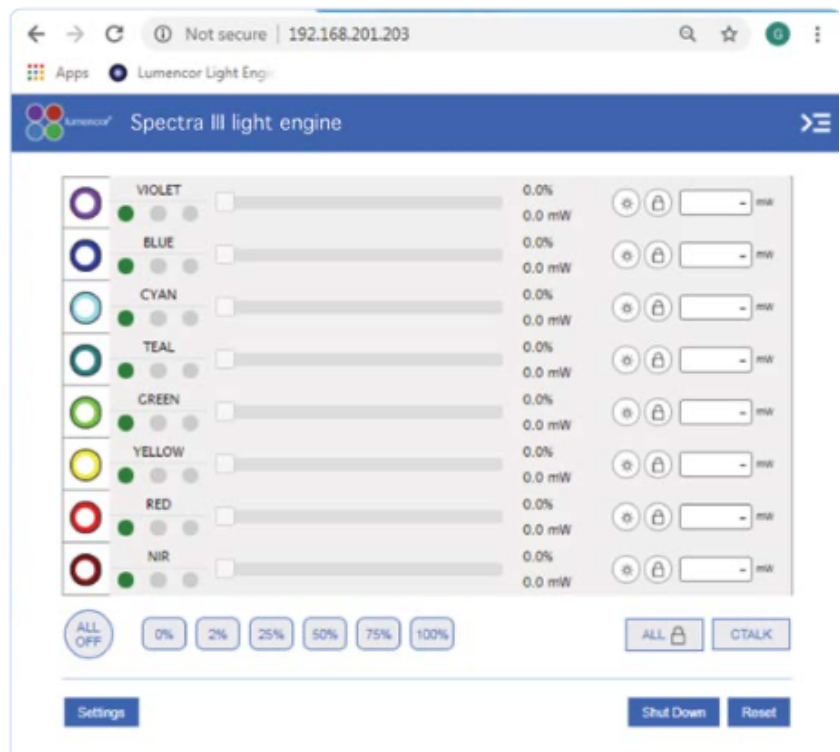


IMAGE: Step 6b